



CASA Approved - UAV Operators Certificate 1-10DN09-01

# UAS Unmanned Aerial Systems

(UAS are distributors of Smart Planes and HydroPilot)

December 2014



**SmartPlanes**  
Made in Sweden

UNDER  
**\$24K**  
AUD

UNDER 2kg  
1.2kg Complete

After four plus years in the field, worldwide, the Smart Plane has delivered professional results for aerial mapping in the harshest of conditions. Inexpensive, lightweight 1.2kg (including camera) the smart plane is a **ONE PERSON** field solution. *(see the results on our web page)*

## Solutions For:

**Mining & Quarries** >> Stock Pile Volumes, Site Photography

**Agriculture, Farming & Forrestry** >> Map/Plans to scale, Contouring, NIR (Near Infrared), Thermal Imaging, Plant & Ground Health

## Deliverables:

- Aerial Photo Plan • Photo/Isometric • Contours Plans • Volumes • Cross Sections
- Spot Heights • Model 3D Images • 3D Automation

Highly portable the smart plane can be deployed anywhere and set up in 5 minutes.

## GROUND STATION



## GR NIR Camera

Specially modified version acquires image data in the near infrared spectrum. Perfect for agriculture and vegetation health monitoring - can be used to compile (NDVI) and other spectral indices. A high resolution optic makes it ideally suited for accurate measurements of spectral properties.



Fits inside the Smart Plane



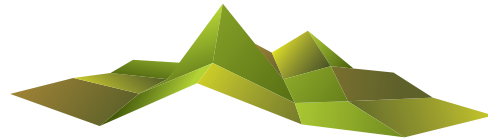
Weight 60 grams

## FLIR Thermal Imaging

Call us with your particular application, the type of plane or copter you are using and we'll advise which Flir model will suit.







# SmartPlanes

UNDER 2kg

1.2kg Complete

UNMANNED AERIAL SURVEY & MAPPING

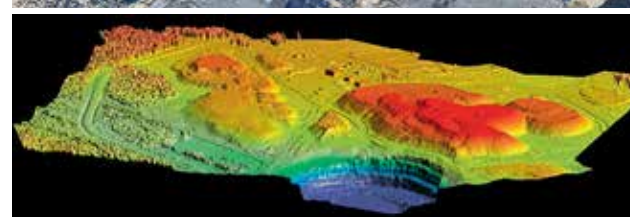
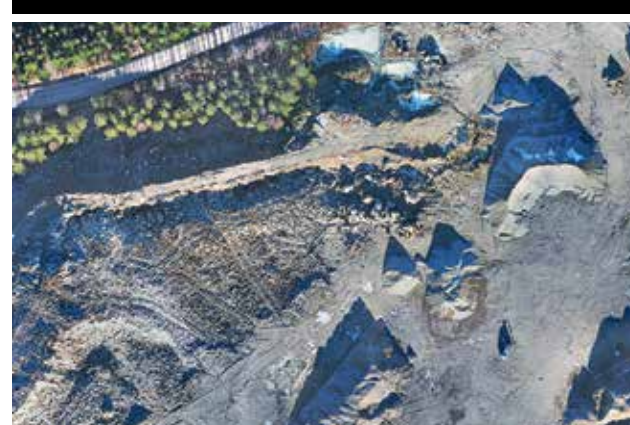
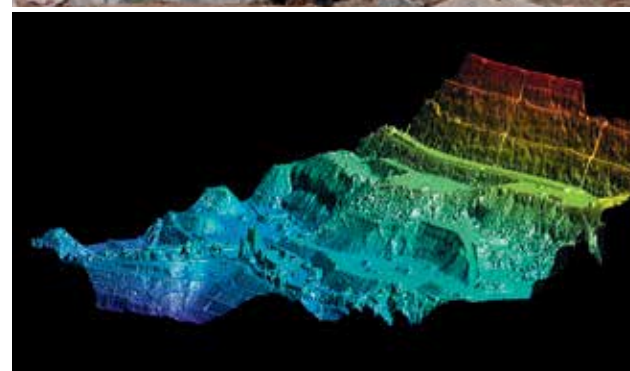


## SmartOne

- a professional aerial surveying tool with proven functionality in operational use all over the world.

ACCURACY • PERFORMANCE • RELIABILITY





## EASY TO USE

The SmartOne system is very easy to use and requires a minimum of training. The fact that the pilot has the option of direct control of the SmartOne aircraft gives the ability to operate from difficult sites and perform precision landings within a few meters.

## RUGGED AND ROBUST

The SmartOne aircraft is rugged and robust and will do the job for many years. The construction with a large cargo bay makes it very versatile and possible to complete survey projects faster and more efficiently.

## FAST AND ECONOMICAL WITH HIGH ACCURACY

The system enables production of detailed orthophotos and digital surface models at a fraction of the cost of conventional methods whenever needed.

The aerial imagery collected can be viewed a few minutes after landing with our aerial mapping software which produces geo-referenced photo mosaics on-site. The UAS aerial image data can be processed with most post processing software into orthophotos or DSMs with very high accuracy.

### Specifications SmartOne-C

Aircraft	1,2 m span, shock resistant, high strength skin, Lexan fuselage, large adaptable cargo bay
Take-off weight	1,2 kg including battery and camera
Propulsion	Electric motor
Telemetry	868MHz, 900 MHz or 2.4 GHz (ISM), range up to 6 km
Performance	Hand launch Precision landing in assisted or automatic modes Recommended maximum wind 13 m/s, 47 km/h Maximum cruise speed 16 m/s, 57 km/h Endurance normal mission 45 min with reserves
Coverage	0.1 to 10 km <sup>2</sup> depending on mission settings
Weather	-20 to +40 C, snow or light rain
Flight modes	Auto, Assisted, Manual
Cameras	12.1 MP compact camera 16.2 with large APS-C CMOS sensor 16.2 MP NIR compact camera Nadir and oblique view, optional Resolution depending on flying height, 2.4-20 cm/pixel



### Australian and New Zealand Distributors

UAS Australia | Level 1, 138 Magill Rd, Norwood, South Australia 5067 | 0408 688 826 or (08) 8363 4111 | [barry@UAS-Australia.com.au](mailto:barry@UAS-Australia.com.au) | [www.UAS-Australia.com.au](http://www.UAS-Australia.com.au)





## HYDROGRAPHIC BOAT

- 💧 Designed for dams, lakes, toxic tailing dams and small streams.
- 💧 Turn key systems include: depth sounder, GPS hardware & data collector, Software Autopilot, steering controller and training.
- 💧 Fully configurable for your existing GPS kit (dependent on software)
- 💧 Choice of depth sounders
- 💧 Hull resistant to toxic environments
- 💧 No Props- minimum draft 100mm, non fouling water jet engines
- 💧 Optional F.P.V. camera on bridge



### Specifications:

- Length 1300mm ● Width 750mm
- Height 450mm ● Twin Hull Catamaran
- Thrusters (2) ● Operational range 1km (plus)
- 100% duty cycle with optional batteries & charger - Lipo batteries x 2 ● Maximum speed 10km ● Weight 18kg
- Controller 2.5GHz manual ● One operator
- Large internal storage for GPS, sounder, controller etc



Call for purchase price of Smart Plane or Hydro Pilot and ask about the **Rent to Own** option (no financials\*). Let us **QUOTE** on your next aerial or hydrographic project. We have CASA approved pilots in most states and the Hydro Pilot can be rented on a daily or weekly basis.

Showroom Level 1, 138 Magill Road, Norwood, South Australia 5069

Phone (08) **8363 4111** Mobile 0408 688 826

Email [sales@UAS-Australia.com.au](mailto:sales@UAS-Australia.com.au)